

LEASE SUMMARY



PROPERTY OVERVIEW

Available SF: 4,050 SF

The 1024 E. Britton building provides a perfect opportunity for a company to make a seamless transition into the professional office area commonly known as Tower Lakes. Tower Lakes is a 40-acre office community that is located just east of Broadway Extension on Britton Road. The location affords a level of accessibility that is hard to match. Whether the goal is to reduce transit time, or provide a location that is easily navigable for a company's customers, the Tower Lakes location delivers.

Lease Rate: \$18.50 SF/yr

Lease Type: NNN

The 1024 E. Britton building is 4,050 square feet, of new custom built office space that presents several advantages over other available office space in Oklahoma City. The available space at 1024 E Britton was constructed in 2015, and has had no prior occupants. The interior finishes have been mindfully selected and offer any user to move into the space that may be confronted with a short window of time to relocate. Moreover, the occupants of 1024 E Britton will be treated to spring fed lake views from the east side of the building. The abundance of parking makes the accessibility of the building much more desirable than the more traditional office setting, and at no additional cost a company does not need to be inconvenienced with additional fees that can greatly affect the lease cost.

Building Size: 4,050 SF

For more information please contact:

TRE DUPUY
tdupuy@priceedwards.com
405.843.7474

1024 E BRITTON SUITE 200

FLOOR PLAN



For more information please contact:

TRE DUPUY

tdupuy@pricedwards.com

405.843.7474

1024 E BRITTON SUITE 200

3D WALKTHROUGH



Click Link For 3D Tour Of Space: [3D Walkthrough](#)

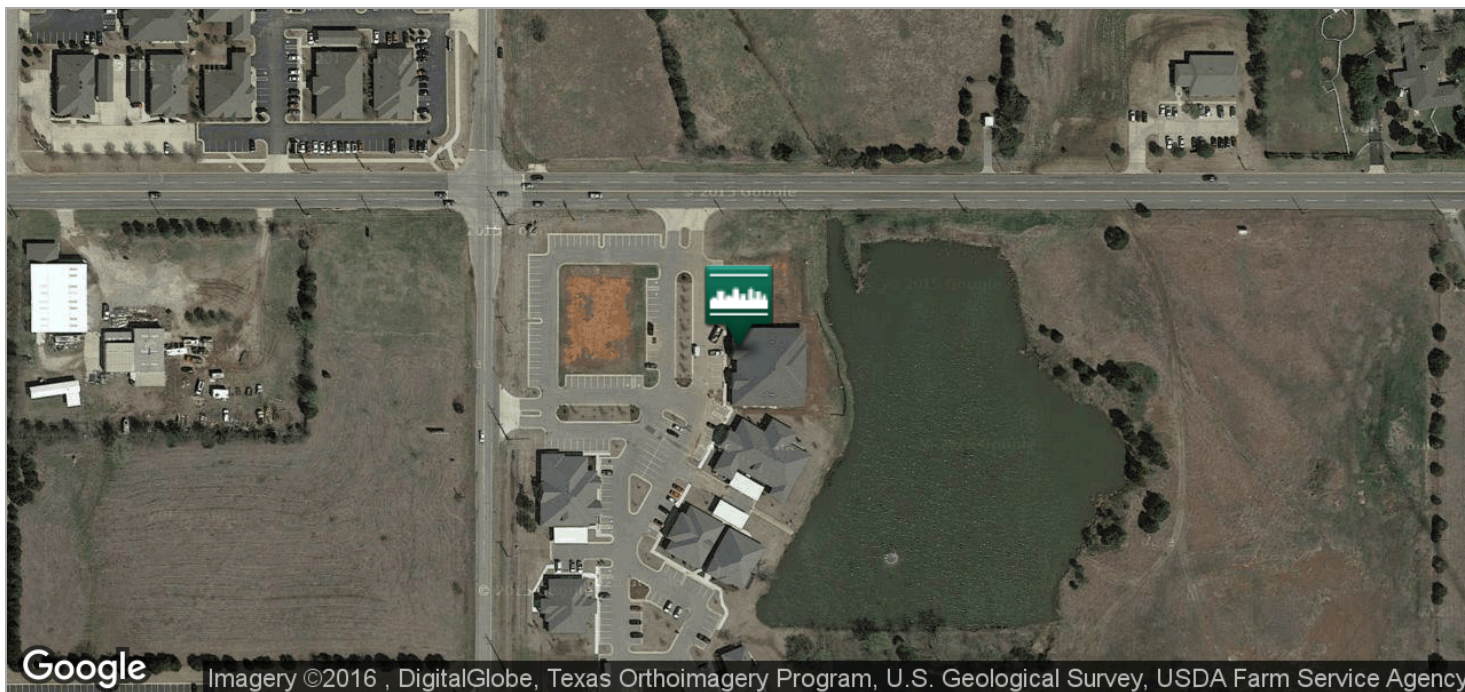
For more information please contact:

TRE DUPUY

tdupuy@priceedwards.com

405.843.7474

LOCATION MAPS



For more information please contact:

TRE DUPUY
tdupuy@priceedwards.com
405.843.7474